

# Atebion, LLC

Document Analyzer  
Documentation

# Document Analyzer

Our Document Analyzer (DA) provides a solution to the tedium of breaking apart legal documents such as RFPs. The DA will save hours, if not days of work. The DA quickly and accurately parses documents, identifies keywords (e.g. will, shall, must, etc.), and then you can configure the results into a Compliance Matrix. You have validation that each of your client's requirements has been addressed, and assistance in any bid/no bid decision. Add notes and writing assignments into your results, and then export to Word, Excel, HTML or format for SharePoint. It is easy to use, accurate and secure, and does not require that MS Word be installed on your computer.

# Document Analyzer

## 1.7.15.X New Features:

- Deep Analysis – Parsing documents down to the individual sentences with enhanced Search (search phrases) and Keyword (list) filtering.
- Quality Check – Using the Flesch Reading Ease readability test. Flesch Reading Ease was designed to indicate comprehension difficulty when reading a passage of contemporary academic English.
- Atebion Tools – A growing set of utilities to save you time and money.

**SECTION C - DESCRIPTION/SPECIFICATION/WORK STATEMENT**

**PART 1 – CONTRACT LINE ITEM DESCRIPTION**

**GENERAL SCOPE OF WORK**  
 The Contractor shall perform the Detail Design and Construction of the T-ADC(X) Class ship(s) at the Contractor’s facilities in accordance with:

- (a) The provisions of this contract;
- (b) System Specification, Attachment J-1;
- (c) Other documents, exhibits, and attachments listed in SECTION J of this contract; and
- (d) All revisions and modifications thereto dated prior to the award of this contract.

**1.0 GENERAL**  
 The Contractor shall prepare the detail design, perform system integration, construct, test, and deliver the ship and initial logistics support of the T-ADC(X) lead ship and up to 11 follow ships, if options are exercised. Reduced ownership cost shall be emphasized throughout the performance of this Contract. The requirements listed herein are applicable independently and separately to each ship.

**1.1 MANAGEMENT.**

**1.1.1 PROGRAM MANAGEMENT.**  
 The Contractor shall apply a multi-functional approach to the integrated, concurrent development of the products and the associated processes applicable to the design, ship systems integration, construction, testing, logistics support and in the performance of all other efforts required by this Contract.

The Contractor shall provide the management effort necessary to ensure effective cost, schedule and technical performance under this Contract. The Contractor shall manage the program in accordance with Contract requirements, the management plan(s), and work schedule(s). The Contractor shall fully integrate major subcontractors and vendors to provide overall direction and guidance, track progress and status, and integrate products and services provided by major subcontractors and vendors’ with the products and services provided by the Contractor.

The Contractor shall identify problems and potential problems that could adversely impact ship performance, cost and/or delivery schedule accompanied by proposed solutions in accordance with the general requirement of Section C entitled “CONTRACTOR PROBLEM IDENTIFICATION REPORTS”.

# Analysis Results Output

Document



Analysis Results

Number	Caption	Keywords	Text
Header Area	Header Area	shall [1], shall perform [1]	SECTION C - DESCRIPTION/SPECIFICATION/WORK STATEMENT PART 1 - CONTRACT LINE ITEM DESCRIPTION GENERAL SCOPE OF WORK The Contractor shall perform the Detail Design and Construction of the T-ADC(X) Class ship(s) at the Contractor’s facilities in accordance with:
(a)	The provisions of this contract;		(a) The provisions of this contract;
(b)	System Specification, Attachment J-1;		(b) System Specification, Attachment J-1;
(c)	Other documents, exhibits, and attachments ...		(c) Other documents, exhibits, and attachments listed in SECTION J of this contract; and
(d)	All revisions and modifications thereto dated ...		(d) All revisions and modifications thereto dated prior to the award of this contract.
1.0	GENERAL	shall [2]	1.0 GENERAL The Contractor shall prepare the detail design, perform system integration, construct, test, and deliver the ship and initial logistics support of the T-ADC(X) lead ship and up to 11 follow ships, if options are exercised. Reduced ownership cost shall be emphasized throughout the performance of this Contract. The requirements listed herein are applicable independently and separately to each ship.
1.1	MANAGEMENT.		1.1 MANAGEMENT.
1.1.1	PROGRAM MANAGEMENT.	shall [5], required [1]	1.1.1 PROGRAM MANAGEMENT. The Contractor shall apply a multi-functional approach to the integrated, concurrent development of the products and the associated processes applicable to the design, ship systems integration, construction, testing, logistics support and in the performance of all other efforts required by this Contract.  The Contractor shall provide the management effort necessary to ensure effective cost, schedule and technical performance under this Contract. The Contractor shall manage the program in accordance with Contract requirements, the management plan(s), and work schedule(s). The Contractor shall fully integrate major subcontractors and vendors to provide overall direction and guidance, track progress and status, and integrate products and services provided by major subcontractors and vendors’ with the products and services provided by the Contractor.  The Contractor shall identify problems and potential problems that could adversely impact ship performance, cost and/or delivery schedule accompanied by proposed solutions in accordance with the general requirement of Section C entitled “CONTRACTOR PROBLEM IDENTIFICATION REPORTS”.

# Navigation

 [Welcome](#)

 [Atebion Tools](#)

 [Projects](#)

 [Documents](#)

 [Select Document \(add new document\)](#)

 [Analyze](#)

 [Keyword Groups](#)

 [Analysis Results](#)

 [Split Segment](#)

 [Combine Multi Segments](#)

 [Export Parsed Results \(Segments\)](#)

 [Analysis Results – Quality Check](#)

 [Run Deep Analyze](#)

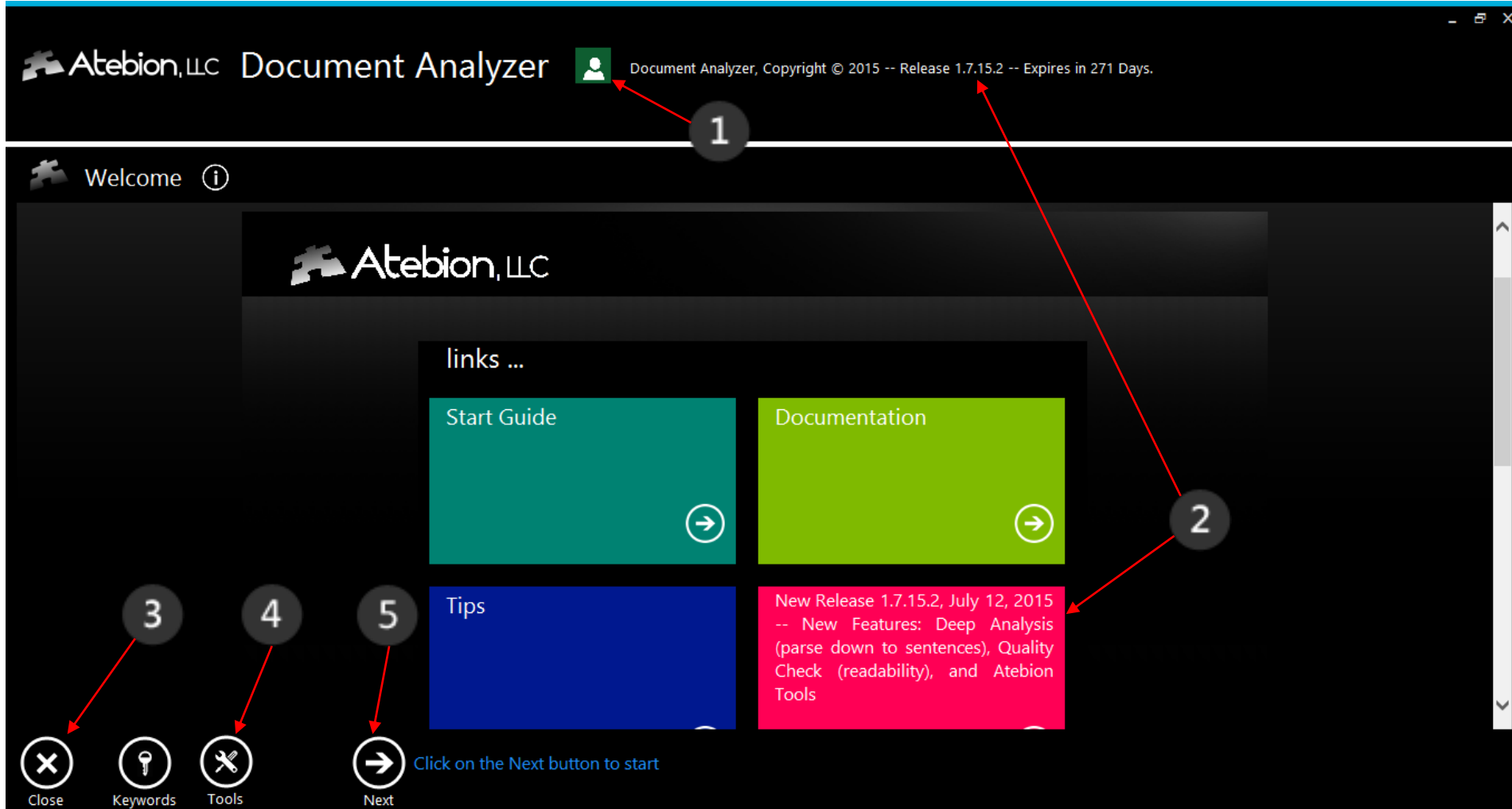
 [Deep Analysis Results](#)



## Purpose:

The Welcome panel is the first panel you see whenever you open the Document Analyzer. The content on this panel is downloaded from Atebion's website. The newest release information is in the lower right rectangle and scroll down for Atebion News.

**Tip:** See #2. Compare the Release numbers to ensure you have the newest release, if not then download the Document Analyzer from Atebion's website and reinstall. This will not effect your license key.



1. User button – Update your user contact information and license key.
2. The Right-Bottom rectangle gives you the newest Document Analyzer release number and some basic update information. At the top is the current Document Analyzer's release number.
3. Close button – Exit this application.
4. [Atebion Tools](#) – Collection of utilities.
5. Next button – Click this button to proceed to the next step.

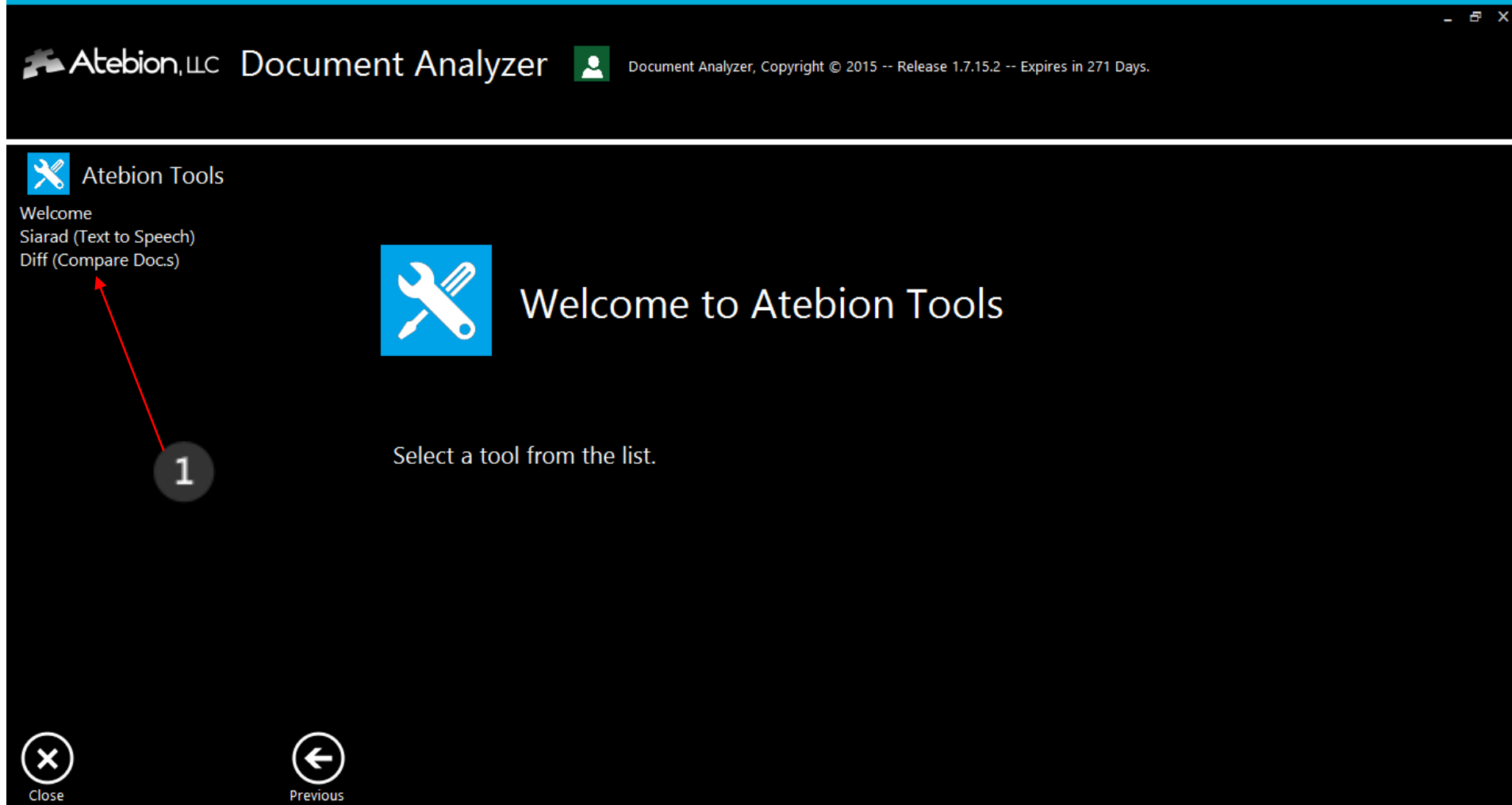
**Purpose:**

(New) Atebion Tools – A growing set of utilities to save you time and money.

**Notice:**

We have a collection of proof-of-concepts that we are planning to port to Atebion Tools.

Additionally, let us know what tools you want. This will help us set priorities on future releases.



1. Diff (Compare Doc.s) – Diff prior to Release 1.7.15.2 was only embedded in the Edit (replace) Document with rerunning the Analyzer.



## Purpose:

A project is similar to a folder used to hold documents. You can organize your documents anyway you want, such as by client or by proposal.

1. New button – Click to add a new Project.
2. Edit button – Click to change the selected Project's description. Note you cannot change the Project's name, because the Project's name is the data key for the data structure.
3. Delete button – Remove the selected Project and associated documents.
4. This chart contains a series of steps with the current step denoted in Blue.



# Documents

## Purpose:

Imports various document formats (e.g. PDF, DOC, DOCX, HTML, RTF [Rich Text Format] and Plain Text). Image PDFs are not supported. The Document Analyzer does Not require MS Word to be installed on your computer.

Atebion, LLC Document Analyzer

Document Analyzer, Copyright © 2015 -- Release 1.7.15.2 -- Expires in 271 Days.

Create a Project | Select a Document | Run Analysis | Analyze the Results | Run Deep Analysis | Analyze Deep Results

Proj: Demo  
Doc: T-ADC(X) Ship RFP Section C

Documents

- Attach001-TWS-SOW
- Attach001-TWS-SOW 2
- RFI+notice
- RFI+notice 1
- RFI+notice 3
- RFI+notice11
- Solicitation 2
- T-ADC(X) Ship RFP Section C**

SECTION C - DESCRIPTION/SPECIFICATION/WORK STATEMENT

PART 1 - CONTRACT LINE ITEM DESCRIPTION

GENERAL SCOPE OF WORK

The Contractor shall perform the Detail Design and Construction of the T-ADC(X) Class ship(s) at the Contractor's facilities in accordance with:

(a) The provisions of this contract;  
(b) System Specification, Attachment J-1;  
(c) Other documents, exhibits, and attachments listed in SECTION J of this contract; and  
(d) All revisions and modifications thereto dated prior to the award of this contract.

1.0 GENERAL

The Contractor shall prepare the detail design, perform system integration, construct, test, and deliver the ship and initial logistics support of the T-ADC(X) lead ship and up to 11 follow ships, if options are exercised. Reduced ownership cost shall be emphasized throughout the performance of this Contract. The requirements listed herein are applicable independently and separately to each ship.

1.1 PROGRAM MANAGEMENT.

The Contractor shall apply a multi-functional approach to the integrated, concurrent development of the products and the associated processes applicable to the design, ship systems integration, construction, testing, logistics support and in the performance of all other efforts required by this Contract.

The Contractor shall provide the management effort necessary to ensure effective cost, schedule and technical performance under this Contract. The Contractor shall manage the program in accordance with Contract requirements, the management plan(s), and work schedule(s). The Contractor shall fully integrate major subcontractors and vendors to provide overall direction and guidance, track progress and status, and integrate products and services provided by major subcontractors and vendors with the products and services provided by the Contractor.

Close | Keywords | Tools | Previous | Next | New | Edit | Delete

## Tips:



- For Federal Government RFPs, we suggest that you divide the various sections (L, C, M and etc.) into separate documents and analyze each section in the Document Analyzer. You can do this with textual PDF files within MS Word.
- We suggest removing Table of Contents for cleaner analysis results.

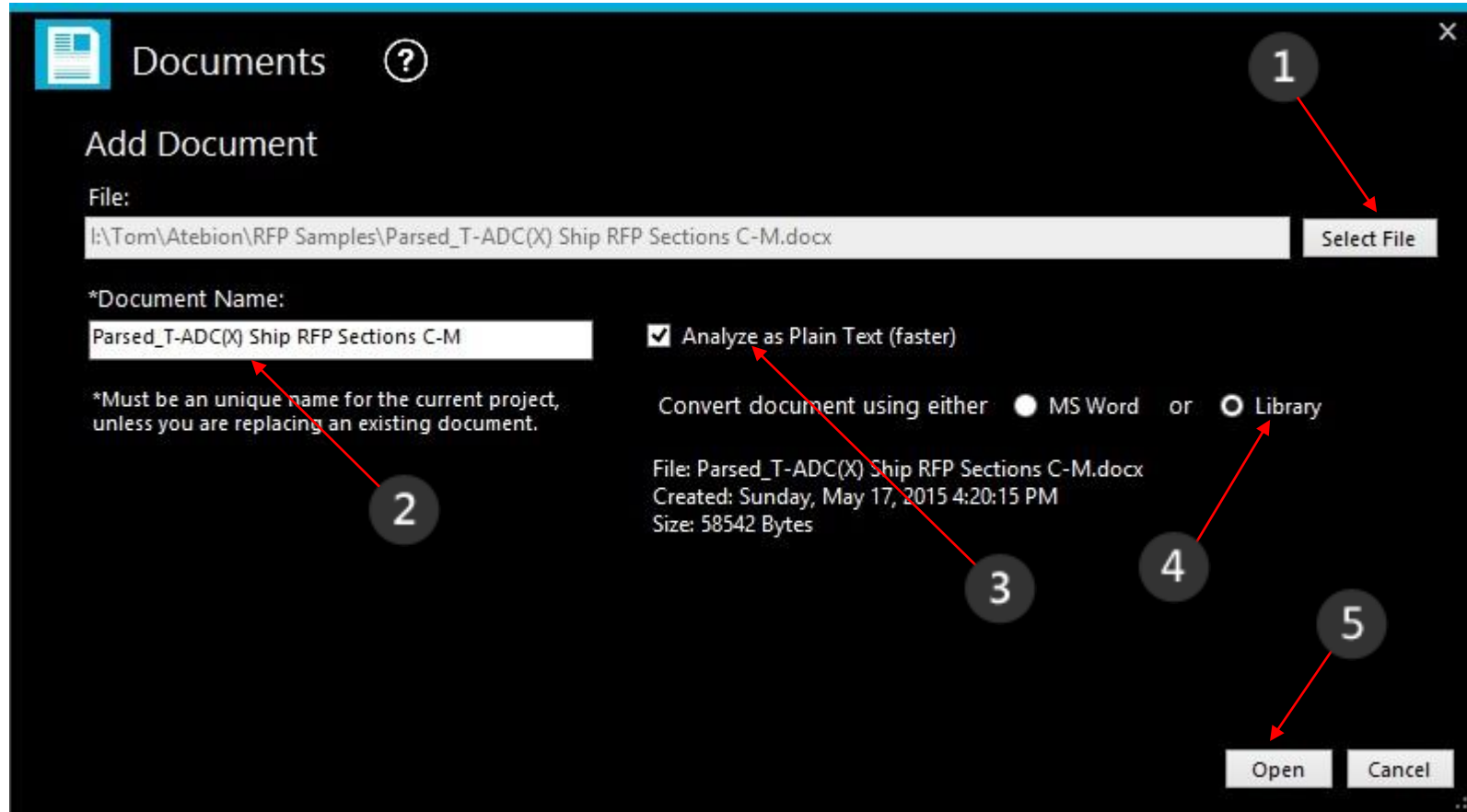
1. New button – Click to add a document to the current Project. See [Select Document](#)
2. Edit button – Click to replace the selected document.
3. Delete button – Click to Remove the selected document.
4. Speaker button – Click to have the selected document read to you .

## Select Document (add new document)



### Purpose:

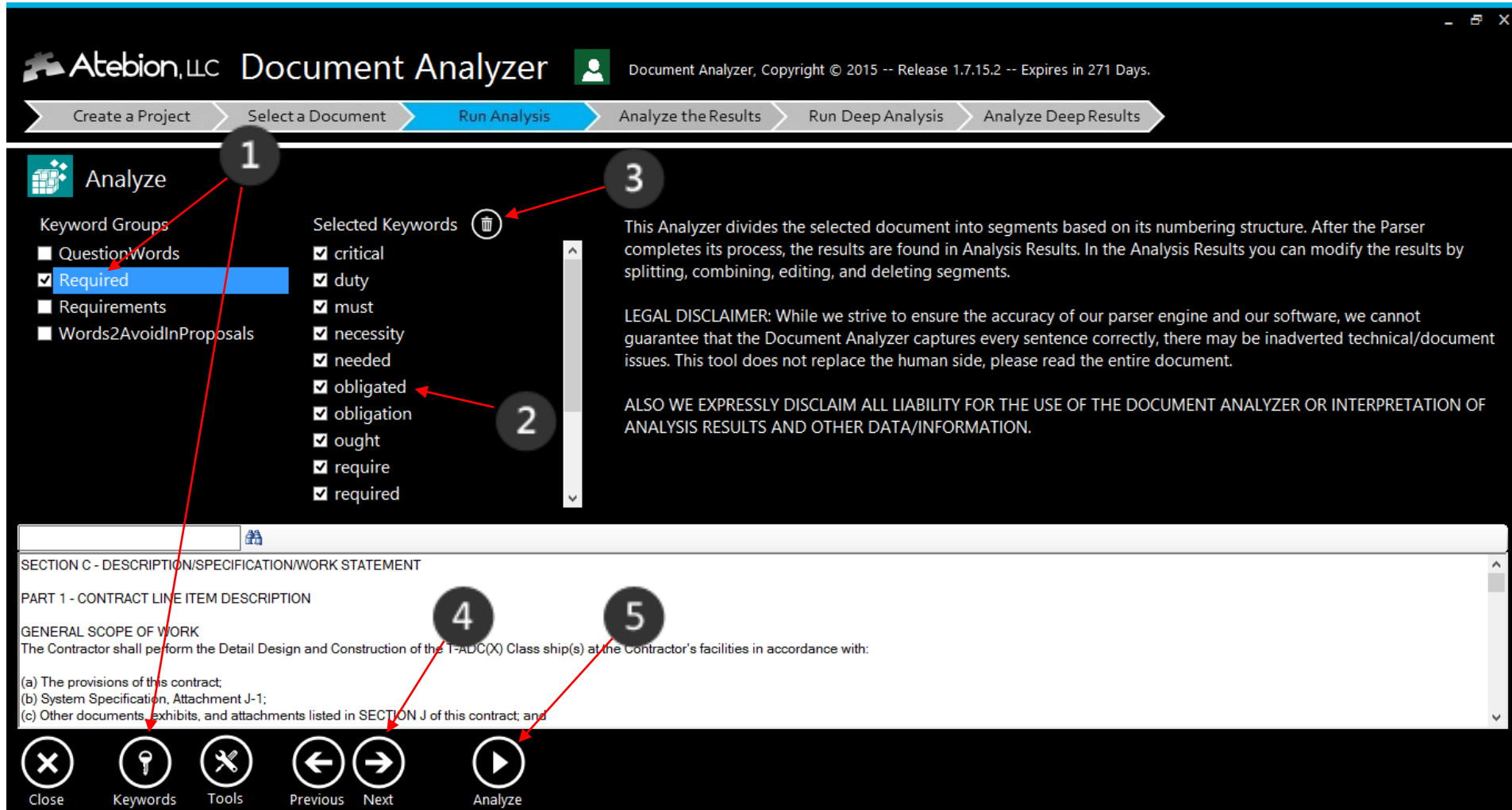
The purpose of the Select Document is to import a selected document into the Document Analyzer (DA). The DA can import various document formats (e.g. PDF [does not support image PDFs], DOC, DOCX, HTML, RTF [Rich Text Format] and Plain Text). – New to DA Release 1.7.14.2, MS Word is no longer required.



1. Select a document to import by clicking the Select File button and then select a file from the File dialog.
2. The Document Name defaults to the same name as your selected document, but the name must be unique to your current project.
3. We suggest analyzing your document as Plain Text for analysis speed. This is particularly important for large documents and for analysis with numerous selected Keywords.
4. You can now import your MS Word (\*.doc & \*.docx) files without requiring MS Word to be installed on your computer. Select the Library option to not use MS Word for conversion.
5. To save, simply click the Open button and you will see your selected document in the Document panel. You might have to wait a short time for conversion.

**Purpose:**

Analyzer your selected document. This analyzer parses legal type documents into segments and identifies keywords and keyword phrases. The analysis results will be on the next panel.




**Atebion, LLC Document Analyzer** Document Analyzer, Copyright © 2015 -- Release 1.7.15.2 -- Expires in 271 Days.

Create a Project | Select a Document | **Run Analysis** | Analyze the Results | Run Deep Analysis | Analyze Deep Results

**Analyze**

Keyword Groups

- QuestionWords
- Required**
- Requirements
- Words2AvoidInProposals

Selected Keywords 

- critical
- duty
- must
- necessity
- needed
- obligated
- obligation
- ought
- require
- required

This Analyzer divides the selected document into segments based on its numbering structure. After the Parser completes its process, the results are found in Analysis Results. In the Analysis Results you can modify the results by splitting, combining, editing, and deleting segments.

LEGAL DISCLAIMER: While we strive to ensure the accuracy of our parser engine and our software, we cannot guarantee that the Document Analyzer captures every sentence correctly, there may be inadvertent technical/document issues. This tool does not replace the human side, please read the entire document.

ALSO WE EXPRESSLY DISCLAIM ALL LIABILITY FOR THE USE OF THE DOCUMENT ANALYZER OR INTERPRETATION OF ANALYSIS RESULTS AND OTHER DATA/INFORMATION.

SECTION C - DESCRIPTION/SPECIFICATION/WORK STATEMENT

PART 1 - CONTRACT LINE ITEM DESCRIPTION

GENERAL SCOPE OF WORK

The Contractor shall perform the Detail Design and Construction of the T-ADC(X) Class ship(s) at the Contractor's facilities in accordance with:

(a) The provisions of this contract;

(b) System Specification, Attachment J-1;

(c) Other documents, exhibits, and attachments listed in SECTION J of this contract; and

Close | Keywords | Tools | Previous | Next | **Analyze**

**Tip:**

If you select multiple Keyword Groups this analysis process will take much longer time to process.

1. Select a Keyword Group. Click the Keywords button to Add, Modify or Delete a [Keyword Group](#).
2. The listing of these keywords are auto-populated from your Keyword Group selection(s). You can unselect keywords you don't want searched.
3. Delete button – Click to remove all keywords from the list.
4. The Next button will be displayed if you had previously ran the Analyzer on this document. Click the [Next](#) button to go to the [Analysis Results](#) panel.
5. Analyze button – Click to parse the current document into segments and identify keywords.



## Purpose:

Keyword Groups – Keyword Groups are keyword libraries. Keyword phrases are supported (e.g. shall install).

**Tip:** Create Keywords Groups for different types of analysis, such as your Business Domain.

Atebion, LLC Document Analyzer Document Analyzer, Copyright © 2015 -- Release 1.7.15.2 -- Expires in 271 Days.

### Keyword Groups

- QuestionWords
- Required**
- Requirements
- Words2AvoidInProposals

critical  
duty  
must  
necessity  
needed  
needed  
obligated  
obligation  
ought  
require  
required  
shall  
should  
vital  
should

1 2 3

Created: Monday, December 15, 2014  
Modified: Tuesday, July 14, 2015  
Qty: 16

Close Previous New Edit Delete

1. New button – Click to add a new Keyword Group.
2. Edit button – Click to add, edit and delete keywords for the selected group.
3. Delete button – Remove the selected Keyword Group.



## Purpose:

We added this step to provide you the capability to split, combine, remove and filter parsed segments prior to exporting them to either Excel, MS Word or HTML files.

**Analysis Results** Quantity of Segments: 58

**Parsed Segments**

Number	Caption	Keywords
Header Area	Header Area	shall [1]
(a)	The provisions of this contract;	
(b)	System specification, Attachment J-1;	
(c)	Other documents, e...	
(d)	All requirements and modifications thereto dated ...	
1.0	GENERAL	shall [2]
1.1	MANAGEMENT.	
1.1.1	PROGRAM MANAGEMENT.	shall [5]
1.1.2	MANAGEMENT PLAN(S).	shall [5], will [2]
1.1.3	RESOURCE AND WORK SCHEDULE.	

**Selected Segment**

1.0 GENERAL  
The Contractor shall prepare the detail design, perform system integration, construct, test, and deliver the ship and initial logistics support of the T-ADC(X) lead ship and up to 11 follow ships, if options are exercised. Reduced ownership cost shall be emphasized throughout the performance of this Contract. The requirements listed herein are applicable independently and separately to each ship.

1. Split button – Splits the selected segment into two segments. See [Split Segment](#).
2. Combine Segments button – combines multiple segments into a single segment. See [Combine Multi Segments](#)
3. Edit button – Edit the selected segment's Number and/or Caption.
4. Export button – Exports the current Parsed Segments to either Excel, MS Word or HTML files. See [Export Parsed Results](#)
5. Notes button – Write notes/comments or add assignments, then click the Diskette icon button to save.

# Split Segment

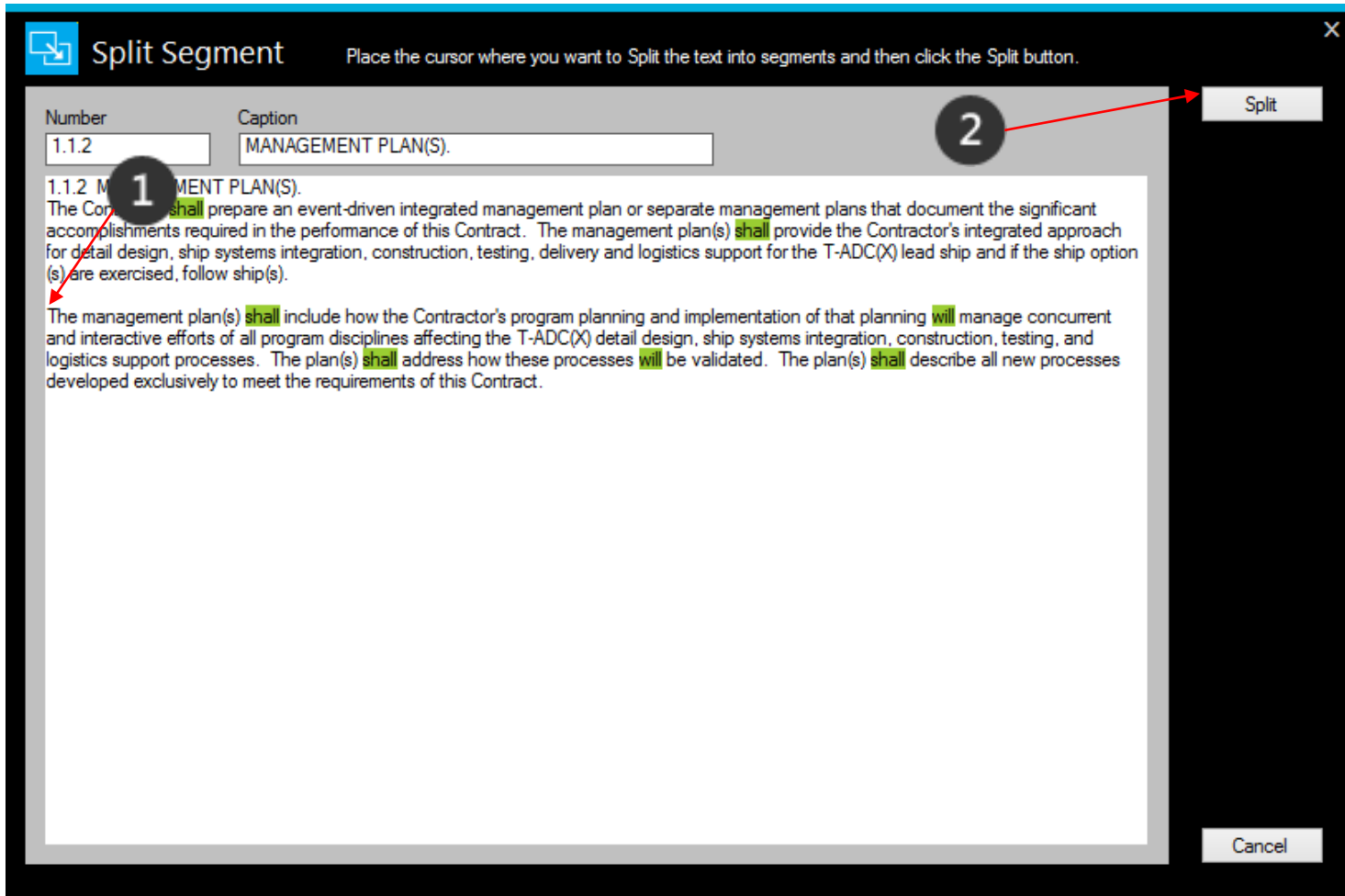


## Purpose:

Splits a parse segment into two segments. Place your cursor at the point you want to split and click the Split button.

**Tip:** It is normally best to split a segment at the beginning of text, not on a blank line.

1. Place your cursor at the point where you want to split the segment.
2. Next, click the Split button, then you will see what the split will look like. See the [Split Detail](#)



# Split Segment



## Purpose:

Review split results prior to saving and change the new split segment Number and Title.

**Tip:** To Undo a split, use the Combine feature.

The screenshot shows a 'Split Segment' dialog box with a title bar and a close button. The main area is divided into two sections. The top section has a 'Number' field with '1.1.2' and a 'Caption' field with 'MANAGEMENT PLAN(S)'. Below these is a text area containing the text: '1.1.2 MANAGEMENT PLAN(S). The Contractor shall prepare an event-driven integrated management plan or separate management plans that document the significant accomplishments required in the performance of this Contract. The management plan(s) shall provide the Contractor's integrated approach for detail design, ship systems integration, construction, testing, delivery and logistics support for the T-ADC(X) lead ship and if the ship option(s) are exercised, follow ship(s)'. A red arrow points from a circled '1' to the '<- Back' button. A red arrow points from a circled '2' to the 'Caption' field. The bottom section has a 'Number' field with '1.1.2-1' and a 'Caption' field with 'The management plan(s) shall include how the ...'. Below these is a text area containing the text: 'The management plan(s) shall include how the Contractor's program planning and implementation of that planning will manage concurrent and interactive efforts of all program disciplines affecting the T-ADC(X) detail design, ship systems integration, construction, testing, and logistics support processes. The plan(s) shall address how these processes will be validated. The plan(s) shall describe all new processes developed exclusively to meet the requirements of this Contract.' A red arrow points from a circled '3' to the 'Save' button. At the bottom right of the dialog are 'Save' and 'Cancel' buttons.

1. Back button – Click to go back to the previous view and reselect the split position.
2. You can rename the Default Name and Number.
3. Save button – Click to save the split as two segments.





# Combine Multi Segments



## Purpose:

The purpose of the Combine Multi Segments feature is to provide you with the capability to combine multiple segments quickly and easily. This feature is a replacement to the original Combine Segments that only combined one segment at a time.

Selection From: 1.2.1.9 To: (3)

Number	Caption	Keywords
1.1.4	REQUIREMENTS MANAGEMENT.	shall [2]
1.1.5	RISK MANAGEMENT.	shall [2]
1.1.6	QUALITY METRICS.	shall [2]
1.1.7	CORRECTIVE ACTION.	shall [8]
1.1.8	OPERATIONAL SECURITY (OPSEC).	shall [2]
1.1.9	DATA DELIVERY.	shall [2], may [1]
1.2	DETAIL DESIGN AND CONSTRUCTION.	
1.2.1	DETAIL DESIGN.	shall [11]
1.2.1.1	TOTAL SHIP INTEGRATION.	shall [3]
1.2.1.2	DESIGN REVIEW.	shall [5], may [2]
1.2.1.3	MINIMIZATION.	shall [1], required [1]
1.2.1.4	SHIP INTEGRATION.	shall [3]
1.2.1.5	NOISE CONTROL AND VIBRATION.	shall [3]
1.2.1.6	DAMAGE CONTROL.	shall [2], should [1]
1.2.1.7	RELIABILITY, MAINTAINABILITY, AND AVAILABILITY.	shall [1]
1.2.1.8	HUMAN SYSTEMS INTEGRATION 5	shall [7]
1.2.1.9	TECHNOLOGY REFRESHMENT.	shall [3]
(1)	Products not in production or expected to be phased out of production by the original equipment manufacturer within two years following ship delivery.	
(2)	Products no longer commercially supported or any component without a supplier documented plan to support for seven years following ship delivery.	
(3)	Products whose maintenance costs exceed replacement costs with current technology.	
1.2.1.10	ENVIRONMENTAL PROTECTION 5	shall [18], required [3], would [1]
1.3	REQUIREMENTS VERIFICATION PROGRAM.	shall [3], required [1]
1.3.1	REQUIREMENTS VERIFICATION PLAN.	shall [2]
1.3.2	CORRECTIVE ACTION.	shall [2]
1.3.3	GOVERNMENT VERIFICATION SUPPORT.	shall [2], will [1], require [1], required [2]
1.3.4	NOTIFICATION OF TEST/INSPECTION EVENTS.	shall [1]
1.3.5	MODIFICATIONS.	shall [2], required [1], critical [1]
1.4	OPERATIONAL SUPPORT.	shall [28], will [1], required [1]
2.0	TEST PROCEDURES AND REPORTS 5	shall [2]
3.0	3.0 REPAIR PARTS	shall [1]
4.0	4.0 SPECIAL STUDIES AND ANALYSES	shall [2]
5.0	5.0 DELIVERABLE DATA	shall [1]

1.2.1.9 TECHNOLOGY REFRESHMENT.  
The Contractor shall implement a technology refreshment program to ensure that Contractor furnished subsystems, equipment, and software are not technologically obsolete at ship delivery. Technology shall be considered obsolete and the Contractor shall replace with current technology if any one of the following criteria is met:

(1) Products not in production or expected to be phased out of production by the original equipment manufacturer within two years following ship delivery.

(2) Products no longer commercially supported or any component without a supplier documented plan to support for seven years following ship delivery.

(3) Products whose maintenance costs exceed replacement costs with current technology.

Cancel Save

1. You can fully expand this window by clicking on the top right rectangle [ ]
2. You have two ways to select child segments. Either by clicking on a row (segment) in the table, below the selected parent segment or you can select the bottom button on the Range control (far left) and scroll down to your last desired segment.
3. The segments will automatically concatenate and be displayed in the right side panel.
4. If you want you select a different parent segment, we suggest that you use the top button on the Range control or you can click on a row above the current selected segment in the table.
5. To save, simply click the Save button and you will see the change on your Analysis Results panel.





# Export Parsed Results (Segments)



Export Parsed Results
✕

**Export**

Line No.s (S/E)

Number

Caption

No. + Caption

Text

Keywords

Notes

**File Types**

\* Excel XLSX

\* Word DOCX

HTML

\* SharePoint

RFP365 XLSX  
RFP365

Export Name

**Filter Results**

Select All

With Only Keywords

With Only Notes

With Only Keywords and Notes

Export
Close

\* Excel, Word and SharePoint are registered trademarks of Microsoft Corporation

1. Format for SharePoint for loading an Excel file into a SharePoint List.
2. Format for importing into RFP365 for via an Excel file. Link to RFP365's website is located below their logo.
3. Export Filer Results. Example, filter segments with only Keywords and/or Notes

Added export for RFP365 in the Document Analyzer release 1.7.13.5, October 1, 2014



# Analysis Results – Quality Check



## Purpose:

(New) Quality Check – Identifies readability of parsed segments using Flesch Reading Ease algorithm. The Flesch Reading ease score is the most common readability checker used. The US military uses it to assess the readability of their technical manuals.

**Tip:** Use Quality Check to check the readability of your Draft Proposal and then assign editors to cleanup low scoring segments via the Notes feature.

**Atebion, LLC Document Analyzer** Document Analyzer, Copyright © 2015 -- Release 1.7.15.2 -- Expires in 271 Days.

Create a Project | Select a Document | Run Analysis | **Analyze the Results** | Run Deep Analysis | Analyze Deep Results

Proj: Demo  
Doc: T-ADC(X) Ship RFP Section C

**Analysis Results** Quantity of Segments: 58 Quality Check: Flesch Reading Ease

Number	Caption	Keywords	Quality
Header Area	Header Area	shall [1]	32.76
(a)	The provisions of this contract;		100
(b)	System Specification, Attachment J-1;		100
(c)	Other documents, exhibits, and attachments ...		53.64
(d)	All revisions and modifications thereto dated ...		53.64
1.0	GENERAL	shall [2]	47.12
1.1	MANAGEMENT.		100
1.1.1	PROGRAM MANAGEMENT.	shall [5]	23.31
1.1.2	MANAGEMENT PLAN(S).	shall [5], will [2]	42.52
1.1.3	RESOURCE AND WORK SCHEDULE.		100

**Quality Check -- Beta 2**

**1** Flesch Reading Ease

The Flesch Reading Ease is a readability test designed to indicate comprehensibility when reading a passage of contemporary academic English.

Higher scores indicate content that is easier to read, while lower values are more difficult to read.

0-29	Very Confusing
30-49	Difficult
50-59	Fairly Difficult
60-69	Standard
70-79	Fairly Easy
80-89	Easy

**2** Quality Check Run button

**3** Next button

**Selected Segment**

1.0 GENERAL

The Contractor shall prepare the detail design, perform system integration, construct, test, and deliver the ship and initial logistics support of the T-ADC(X) lead ship and up to 11 follow ships, if options are exercised. Reduced ownership cost shall be emphasized throughout the performance of this Contract. The requirements listed herein are applicable independently and separately to each ship.

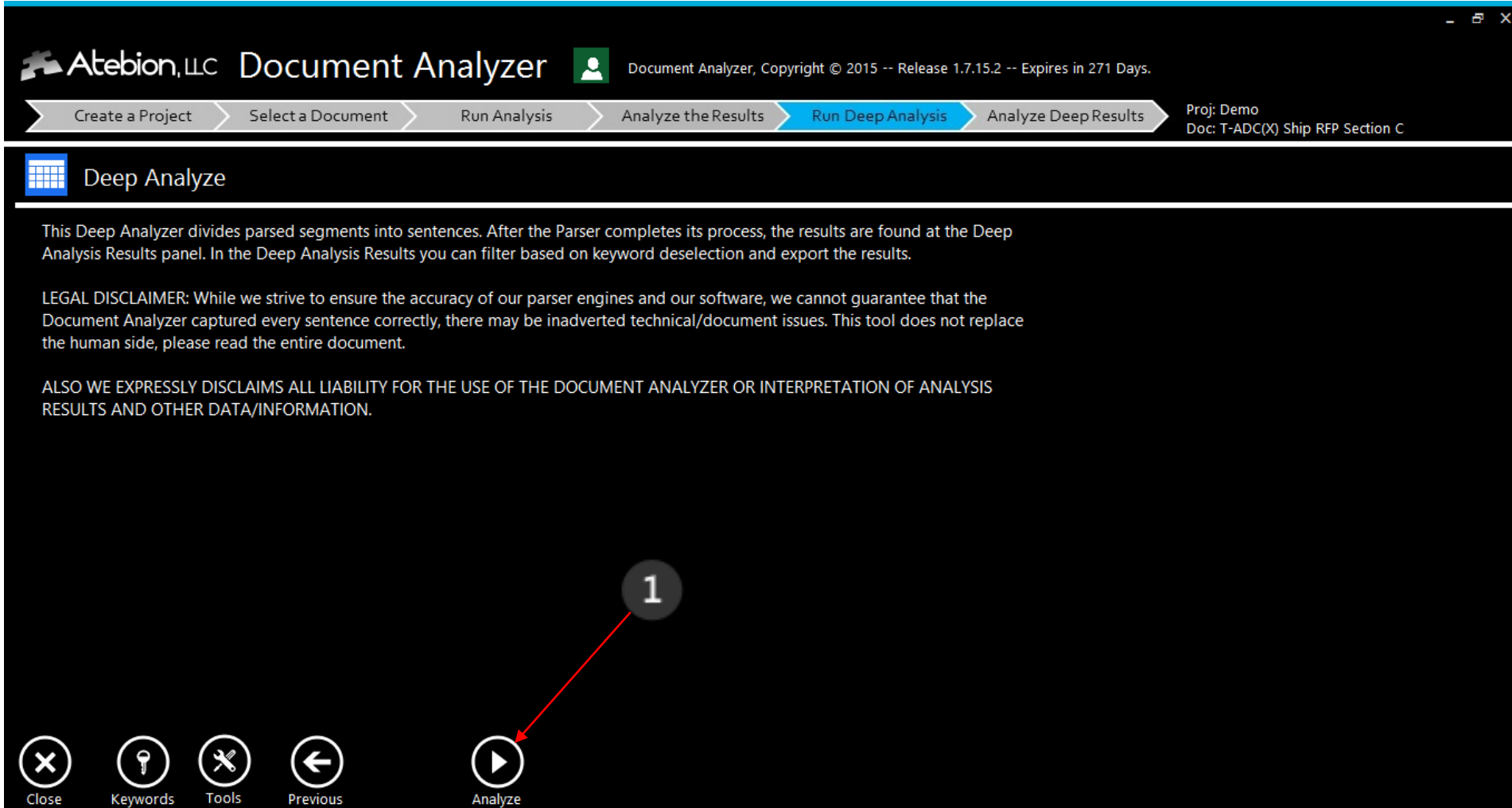
Close | Keywords | Tools | Previous | Next

1. Quality Check button – Click to display the Quality Check subpanel.
2. Quality Check Run button – Click to run Flesch Reading Ease test on each of the segments. – Therefore, if you split or combine segments, you may want to rerun Quality Check .
3. Next button – Click to optional proceed with Deep Analysis.



## Purpose:

(New) Parses segments down to the individual sentences.



The screenshot shows the Atebion Document Analyzer interface. At the top, the title bar reads "Atebion, LLC Document Analyzer" with a copyright notice: "Document Analyzer, Copyright © 2015 -- Release 1.7.15.2 -- Expires in 271 Days." Below the title bar is a progress bar with five steps: "Create a Project", "Select a Document", "Run Analysis", "Analyze the Results", "Run Deep Analysis" (highlighted in blue), and "Analyze Deep Results". To the right of the progress bar, it says "Proj: Demo" and "Doc: T-ADC(X) Ship RFP Section C".

The main content area is titled "Deep Analyze" and contains the following text:

This Deep Analyzer divides parsed segments into sentences. After the Parser completes its process, the results are found at the Deep Analysis Results panel. In the Deep Analysis Results you can filter based on keyword deselection and export the results.

LEGAL DISCLAIMER: While we strive to ensure the accuracy of our parser engines and our software, we cannot guarantee that the Document Analyzer captured every sentence correctly, there may be inadvertent technical/document issues. This tool does not replace the human side, please read the entire document.

ALSO WE EXPRESSLY DISCLAIMS ALL LIABILITY FOR THE USE OF THE DOCUMENT ANALYZER OR INTERPRETATION OF ANALYSIS RESULTS AND OTHER DATA/INFORMATION.

At the bottom of the interface, there is a navigation bar with five buttons: "Close", "Keywords", "Tools", "Previous", and "Analyze". A red arrow points from a grey circle containing the number "1" to the "Analyze" button.

1. Analyze button – Click to run Deep Analysis.

# Deep Analysis Results



## Purpose:

(New) Deep Analysis Results – Parsed segments down to the individual sentences with enhanced Search (search phrases), Keyword (list) Filtering and Export with segments/sentences options.

1. Sentences are numerated as –S#. For example, 1.1-S2 is segment 1.1 and S2 is the second sentence of this segment. Near the bottom are two text areas, the first is the sentence area and the second (bottom) is the sentence's associated segment with the sentence highlighted in Yellow.
2. Keywords Found – You can deselect keywords and filter only on the selected keywords.
3. Search – In Deep Analysis Results you can search with phrases (e.g. "should install") with text in double quotes. In the Analysis Results you can't. The Deep Analysis Results uses an enhanced search engine and if feedback goes well, we plan to upgrade the Analysis Results search engine.

**Atebion, LLC Document Analyzer** Document Analyzer, Copyright © 2015 -- Release 1.7.15.2 -- Expires in 271 Days.

Create a Project > Select a Document > Run Analysis > Analyze the Results > Run Deep Analysis > **Analyze Deep Results** Proj: Demo Doc: T-ADC(X) Ship RFP Section C

### Deep Analysis Results

Filtered by Keywords 49 of 215

Number	Caption	Keywords
1.1.2-S2	MANAGEMENT PLAN(S).	shall [1], require [1], required [1]
1.1.2-1-S1	The management plan(s) shall includ...	shall [1], will [1]
1.1.2-1-S2	The management plan(s) shall includ...	shall [1], will [1]
1.1.2-1-S3	The management plan(s) shall includ...	shall [1], require [1]
1.1.3.1-S2	SCHEDULE(S).	shall [1], require [1], required [1]
1.1.3.1-S4	SCHEDULE(S).	shall [2], critical [1]
1.1.3.3-S6	EARNED VALUE MANAGEMENT SYST...	will [1]
1.1.3.3-S7	EARNED VALUE MANAGEMENT SYST...	will [1]
1.1.4-S2	REQUIREMENTS MANAGEMENT.	shall [1], require [1]
1.1.4-S3	REQUIREMENTS MANAGEMENT.	shall [1], require [2]

Select	Keyword	Count
<input checked="" type="checkbox"/>	must	0
<input checked="" type="checkbox"/>	shall	150
<input checked="" type="checkbox"/>	will	6
<input checked="" type="checkbox"/>	should	1
<input checked="" type="checkbox"/>	require	49
<input checked="" type="checkbox"/>	required	12
<input checked="" type="checkbox"/>	would	1
<input checked="" type="checkbox"/>	ought	0
<input checked="" type="checkbox"/>	possibility	0

Notes for Sentence: Search in results, Keywords 215, Exported 5

Filter Results per selected Keywords

#### Selected Sentence/Segment

The Contractor shall identify key events leading up to the Contract Milestones in the schedule(s) and shall identify critical paths for completion of each Contract Milestone and key event.

1.1.3.1 SCHEDULE(S).  
The Contractor shall prepare an event-based integrated work schedule or separate work schedules that depict all activities required for the performance of this Contract. The schedule(s) shall include all program activities defined in the Contractor Work Breakdown Structure (CWBS) addressed below. The Contractor shall identify key events leading up to the Contract Milestones in the schedule(s) and shall identify critical paths for completion of each Contract Milestone and key event.

The schedule(s) shall be kept current with schedule modifications and completed tasks.

Close Keywords Tools Previous

# Legal Stuff

## LICENSE AGREEMENT

### IMPORTANT - READ CAREFULLY

This license and disclaimer statement constitutes a legal agreement ("License Agreement") between you (either as an individual or a single entity) and Atebion LLC, for this software product ("Software") Start Document Analyzer, including any software, media, and accompanying on-line or printed documentation.

BY DOWNLOADING, INSTALLING, COPYING, OR OTHERWISE USING THE SOFTWARE, YOU AGREE TO BE BOUND BY ALL OF THE TERMS AND CONDITIONS OF THIS LICENSE AND DISCLAIMER AGREEMENT.

You may not modify, reverse engineer, decompile, or disassemble the object code portions of this software.

You may not resell, bundle, offer for download, and offer as service on or off any network, including Intranets and the Internet this software without express written permission from Atebion LLC.

This Software is owned by Atebion LLC and is protected by copyright law and international copyright treaty. Therefore, you must treat this Software like any other copyrighted material (e.g., a book).

All rights not expressly granted in this license agreement are reserved entirely to Atebion LLC.

This software is provided "as is" and without any warranties expressed or implied, including, but not limited to, implied warranties of fitness for a particular purpose.

In no event shall Atebion LLC be liable for any damages whatsoever (including, without limitation, damages for loss of business profits, business interruption, loss of business information, loss of life, or other loss) arising out of the use of or inability to use this software or documentation, even if Atebion LLC has been advised of the possibility of such damages. Good data processing procedure dictates that any program be thoroughly tested with non-critical data before relying on it. The user must assume the entire risk of using the program. This disclaimer of warranty constitutes an essential part of this License Agreement.

In no event shall Atebion LLC, or its principals, shareholders, officers, employees, affiliates, contractors, subsidiaries, or parent organizations, be liable for any incidental, consequential, or punitive damages whatsoever relating to the use of Document Analyzer, or to your relationship with Atebion LLC.

In no event does Atebion LLC authorize you to use Document Analyzer in applications or systems where Document Analyzer failure to perform can reasonably be expected to result in physical injury, or in loss of life. Any such use by you is entirely at your own risk, and you agree to hold Atebion LLC harmless from any claims or losses relating to such unauthorized use.

ANY LIABILITY OF Atebion LLC WILL BE LIMITED EXCLUSIVELY TO PRODUCT REDAP-PECEMENT OR REFUND OF PURCHASE PRICE exclusively at the discretion of Atebion LLC.

Document Analyzer is based on a proprietary process and methods that have been disclosed. The Document Analyzer process and methods are owned by Atebion LLC and may not be disclosed or used except for educational purposes. Whenever the Document Analyzer process and methods are presented, Atebion LLC is to be clearly identified as the sole originator of the Document Analyzer process and method. Under no circumstances does Atebion LLC grant permission to codify the Document Analyzer process and methods without express permission of Atebion LLC.